



DAVIS  
ALPHARETTA

# Alpharetta's Newest Boutique Offering

SIGNAGE OPPORTUNITIES AVAILABLE



Now Pre-Leasing

Located Directly Off GA-400

**NEWMARK**



Located in the North Fulton submarket, directly off of GA-400, Davis Alpharetta offers an opportunity to be centrally located to the areas two most popular shopping destinations — Avalon & North Point Mall and surrounded by several entertainment and dining options including neighboring Topgolf.

Davis Alpharetta can offer premium brand exposure with signage opportunities. With efficient floor plans, ample on-site parking, a number of Fortune 500 companies in the neighborhood and convenient access to the GA 400, Davis Alpharetta is the perfect location.



#### BUILDING HIGHLIGHTS





±23,530<sup>RSF</sup>  
Building Size

3  
Floors

Outdoor  
Shared Green Space



# Davis Alpharetta — The Place to Be.

-  Highly Efficient Floor Plans
-  Signage/Branding Opportunities
-  Elite Location with Endless Entertainment Options
-  New cut-through to GA-400 (Davis Drive Extension)



## FLOOR PLATES

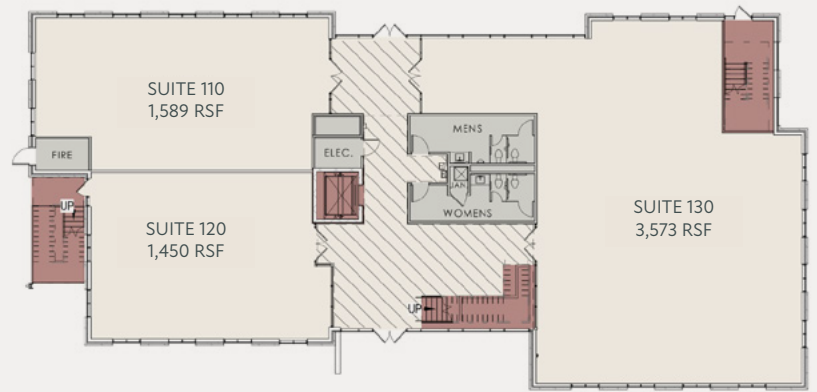
01  
6,612 RSF  
Suite 110 - 1,589 RSF  
Suite 120 - 1,450 RSF  
Suite 130 - 3,573 RSF

02  
6,999 RSF  
Suite 210 - 3,049 RSF  
Suite 220 - 3,950 RSF

03  
Fully Leased



Direct Elevator Access  
on Second and Third Floors




2ND LEVEL SAMPLE FLOOR PLAN

# Customize Your Space.

Start from scratch, customize your floor plan to maximize productivity.



**DAVIS**  
**ALPHARETTA**

  
**±6,999 RSF**  
2nd Floor Size

  
**2<sup>nd</sup>**  
Floor Sample

  
**Efficient**  
Space



# Parking for Everyone.



With the above market parking ratio, Davis Alpharetta truly has it all. Tenants enjoy secure parking as well as a strong connection to surrounding amenities.



4/1,000<sup>SF</sup>

Parking Ratio



Connected

To Surrounding Amenities



Davis Drive

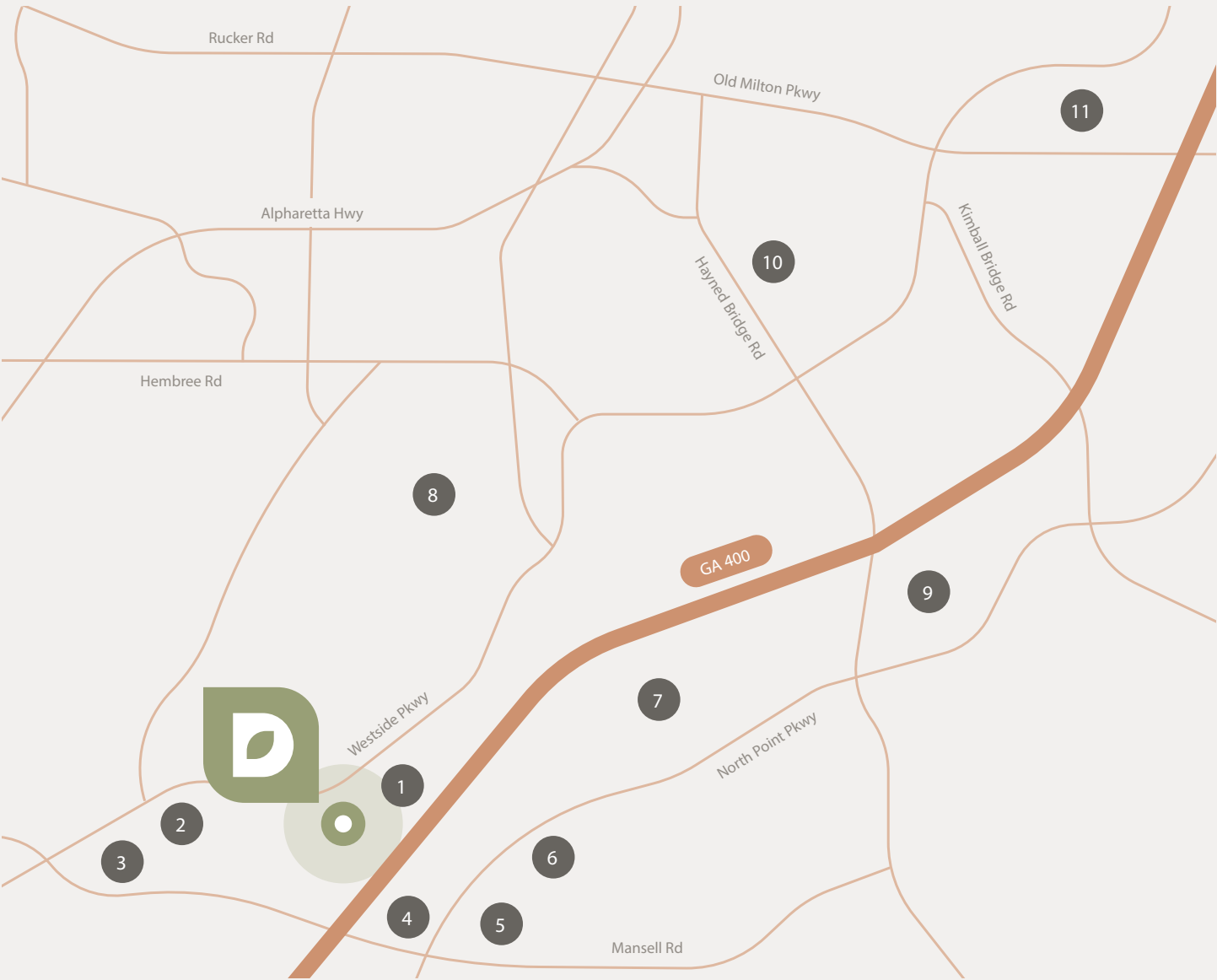
Extension

# Surrounded by Everything.

With the extension of Davis Drive to Westside Parkway, tenants enjoy a direct connection to nearby Top Golf as well as an ease of travel to Alpharetta's top amenity base.

## POINTS OF INTEREST

- 1 Top Golf
- 2 Wendy's  
Subway
- 3 Main Event  
Miller's Ale House  
Pappadeaux  
Rays at Killer Creek
- 4 P.F. Chang's
- 5 Chili's  
Burger King
- 6 Jason's Deli  
Five Guys Burgers
- 7 Northpoint Mall  
Dillard's  
Macy's  
Von Maur  
JCPenney
- 8 Ameris Bank Amphitheatre
- 9 Embassy Suites  
Jo-Ann  
Best Buy  
Guitar Center
- 10 Ruth's Chris Steakhouse
- 11 The Avalon  
Whole Foods  
The Container Store  
Kona Grill  
Rumi's Kitchen  
Superica  
Marlow's Tavern  
True Food Kitchen  
South City Kitchen  
Jeni's Splendid Ice Cream  
Chic-fil-A  
Starbucks







0 500 1,000 Feet  
389642





FOR MORE INFORMATION

RJ Zurak

+1 716 864 2581

[rj.zurak@nmrk.com](mailto:rj.zurak@nmrk.com)

Brad Kirschner

+1 404 509 5930

[brad.kirschner@nmrk.com](mailto:brad.kirschner@nmrk.com)

Morgan McMenamy

+1 404 771 1199

[morgan.mcmenamy@nmrk.com](mailto:morgan.mcmenamy@nmrk.com)

Newmark

+1 770 552 2400

[nmrk.com](http://nmrk.com)

Newmark | Licensed Real Estate Broker



**NEWMARK**